

For High-Pressure Polyurethane Metering



- *Inert flushing of new pumps; standard*
- *Computerized testing for new and rebuild pumps*
- *Magnetic Couplings available for all Models*
- *Diagnosis and Repair of existing Pumps*
- *Rebuild Pumps available from stock*
- *Pump Exchange program of same model pump with a core credit allowance*



Linden maintains the largest inventory of Rexroth Pumps in North America.

SO2 Series Rexroth Pumps

**Sizes available;
in CC/Rev: 12, 28, 55 and 107**

This pump has a case and seal rating of 10 bar and double-seals on pump shaft and hand-wheel adjustment.

Pump provides the greatest degree of processing flexibility and readily replaces older series Rexroth pumps.

Open or closed suction configuration available

Please let us know if you need Left or Right hand wheel location (determined facing drive shaft)

Inert Flushing and Computerized Testing

Prior to shipment from Linden each new Rexroth pump undergoes flushing with inert chemicals. Any chance for system contamination at customer's site because of residue factory hydraulic oil in the pump is eliminated. Flow and pressure performance is verified on a computerized test stand and a test report is available upon request.

Computerized testing eliminates possibility of human error.

Pump Repair

Should you experience machine problems, Linden Tech Service is available by **Phone 24/7**

We service all sizes of Rexroth Polyurethane pumps regardless of machine origin

Linden's repair technicians are fully trained by Rexroth

Pumps are rebuilt using original Rexroth parts.

Linden Industries, Inc.
137 Ascot Parkway, Cuyahoga Falls, Ohio 44223
Telephone: 330.928.4064 • Fax: 330.928.1854
Emergency Service 24/7: 330.928.4064
info@lindenindustries.com • www.lindenindustries.com

LINDEN
Linden Industries, Inc.
Polyurethane Processing Equipment





These chemical pumps are rebuilt in full compliance with EPA regulations

All pumps are pressure and flow tested on Linden's computerized test stand.

Any repaired or rebuild pump shipped from Linden is accompanied by a computer generated test report.

In most cases, pumps can be rebuilt at a fraction of the cost of a new pump, and most pumps can be rebuilt more than once.

When your pump is received, we disassemble and clean it to assess its condition.

We will provide a written repair estimate with an approximate delivery time

Expedited repair service is available for Emergency Situations or as an alternative we offer:

A Pump Exchange Program

- Our unique pump exchange program was created for those with more immediate needs. Here's how the program works:
- We will overnight a reconditioned pump* to your facility. (*Based on availability).
- A purchase order is required in order for us to ship the reconditioned pump.
- Upon receipt of your faulty pump, our technicians will thoroughly inspect and evaluate the cost of rebuilding it.
- If we determine that the damaged pump can be rebuilt, we will issue a credit towards the purchase of the reconditioned pump
- If it is determined that the pump cannot be rebuilt, we will either return the pump to you or at your discretion dispose of the pump here at Linden.

To ship a pump to Linden, please follow these steps:

- Contact our service department to report the type of pump and conditions of the failure. You may be asked a number of questions to help us in our evaluation of pump performance.
- Our service department will provide you with a RMA (Return Material Authorization) and specific shipping information.
- When the pump arrives, Linden technicians will disassemble and clean it to assess its condition.
- A written estimate and approximate delivery date will be promptly forwarded to you for approval.
- If the pump is to be rebuild we require a purchase order prior to commencing with this work

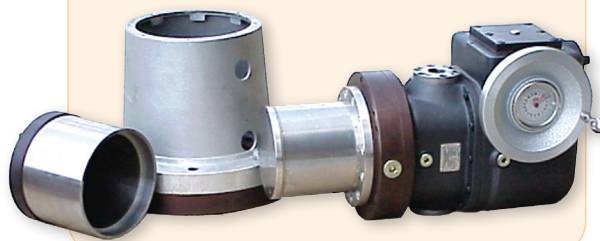
Warranty:

Our Repair Warranty covers parts and labor for 90 days from the date of shipment.

New Chemical Pumps receive the full manufacturer's warranty which transfers to the end user at the date of shipment.

Magnetic Couplings

We offer optional magnetic couplings for Rexroth pumps in order to eliminate any chance for drive shaft seal leakage



Magnetic Couplings - How They Work

A magnetic coupling consists of two magnet assemblies; an outer magnet (the driver magnet) and an inner magnet (the driven magnet). The outer magnet is connected to a motor and the inner magnet is directly attached to the pump drive shaft. Since the inner magnet is isolated through a can attached to the pump housing, seals and therefore leaks are eliminated.

When load (torque) is applied, the coupling deflects angularly and the magnets create a force of simultaneous attraction and repulsion. This force is used to transfer torque from the motor to the drive shaft. This permanent magnet coupling creates neither slippage nor induction current during rotation.

Contact us:

For Parts call:
Mo - Fri 8:00 AM – 5:00 PM EST
330- 971-7731

For Repair call:
Mo - Fri 8:00 AM – 5:00 PM EST
330- 971-7759

For Emrgency Service 24/7 please call:
330-928-4064

E-mail:
parts@lindenindustries.com
service@lindenindustries.com

